

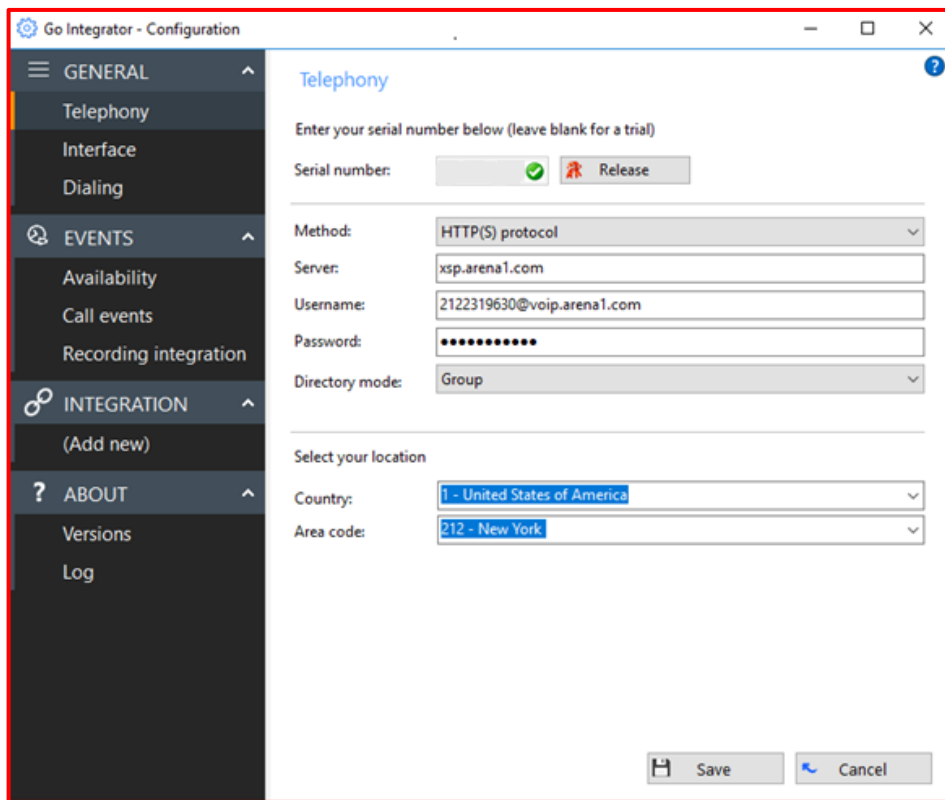
Go Integrator – Installation Quick Start Guide

Installation

Download and install the newest Go Integrator for PC or Mac at <https://www.gointegrator.com/downloads/software/us>.

Once installed, Go Integrator will present Telephony settings in the Configuration window.

You can also access the Configuration window by right-clicking the Go Integrator icon in the system tray menu and then left-clicking the 'Configuration' option from the menu.



You will need to set the following in the Telephony page in order to link your Go Integrator with your TouchTone phone account.

The serial number field is where you enter your serial number in order to activate the product. However, Go Integrator products can be setup for a 30-day trial simply by downloading and installing the client software as normal and leaving the license serial number field blank.

- **Method:** HTTP(S) Protocol
- **Server:** xsp.arena1.com

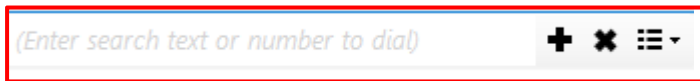
- **Username:** This will be your TouchTone phone number used to log into the web portal and Communicator clients @voip.arena1.com **ex:** 2122319630@voip.arena1.com
- **Password:** This will be the password used to log into the web portal and Communicator clients.
- **Directory mode:** This should be set to **Group**.
- **Country:** Select your Country
- **Area Code:** Select your area code.

Click the 'Save' button to store the information you've entered and apply the configuration.

Presence Window

The Presence window provides a quick way to check the availability of your co-workers. The Presence window is accessible from the tray menu and contains a list of all the extensions, unless your administrator has chosen a different arrangement.

Click on the Tray menu and select View by Extension or Customize.



The customize view will allow you to add and monitor selected users. Click on the “add” symbol (a popup will appear) and then on “search” for all the users. Check mark the user(s) you wish to monitor and click “add” when done.

